



ESF Transnational Cooperation Platform

First meeting with competence centres for social innovation

20 May 2021, online



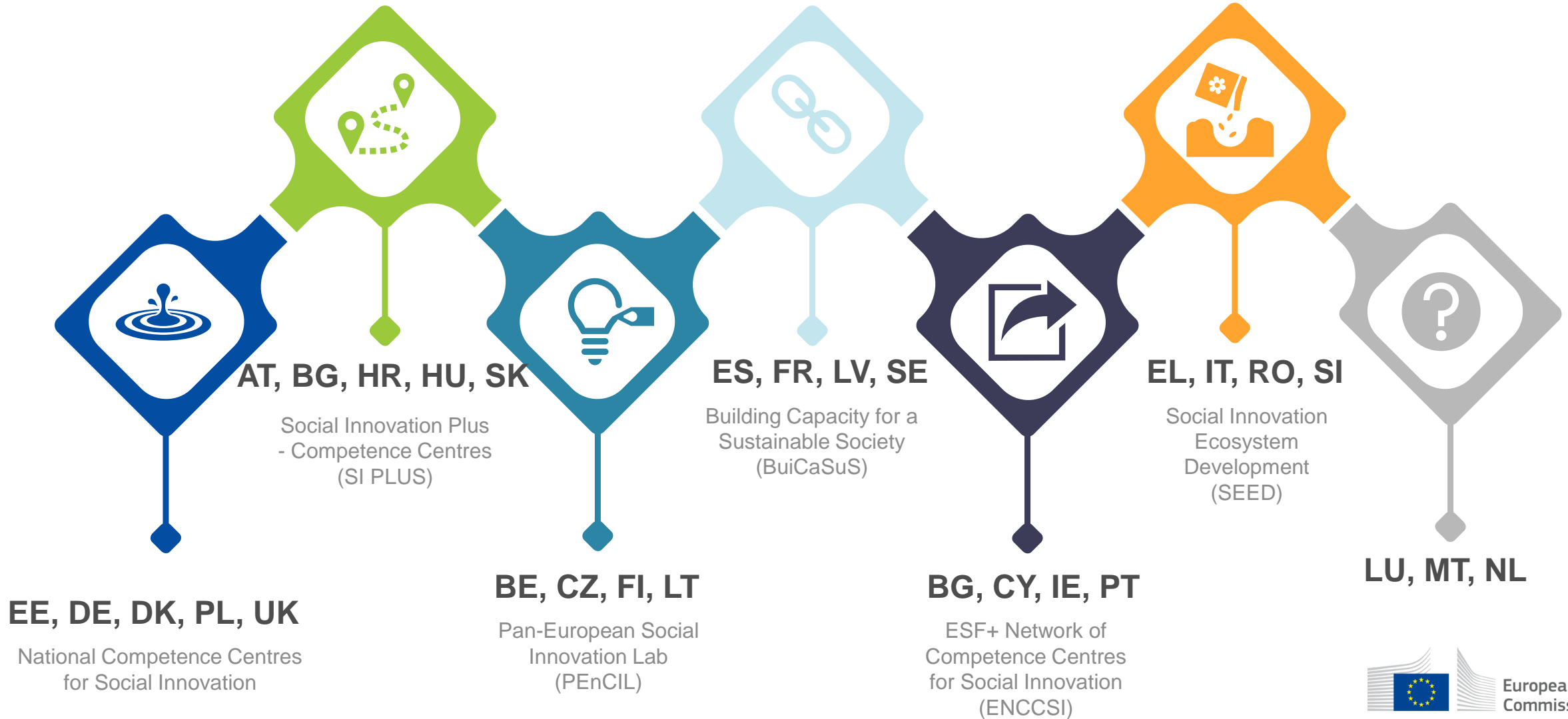
Welcome

Andrea LERUSTE | European Commission

Agenda

- | 10.20 – 10.40 CET National competence centres for social innovation in the context of ESF+
Risto Raivio, European Commission
- | 10.40 – 11.40 CET Introducing the selected projects creating national competence centres for social innovation
Stephen J. Barnett, Thematic expert of CoP on Social Innovation
Eline Vermeersch, PEnCIL
Deirdre Mortell, ENCCSI
Norbert Kunz, National Competence Centres for Social Innovation
Patricia Bezunartea Barrio, BuiCaSuS
Barbara Willsberger, SI PLUS
Francesca Rizzo, SEED
- | 11.40 – 12.00 CET Support for mutual learning between the projects
Karolina Jakubowska, CoP Coordinator
- | 12.00 – 12.15 CET Comfort break
- | 12.15 – 13.00 CET Session for lead organisations
- | 12.15 – 12.30 CET Session for national partner organisations

Introductions



Introducing European Commission team

- Marianne DOYEN – Following: ENCCSI, SEED
- Laura MANGENG
- Maria-Anna PARASKEVA – Following: SI PLUS, BuiCaSuS
- Risto RAIVIO – Following: PEnCIL, National Competence Centres for Social Innovation

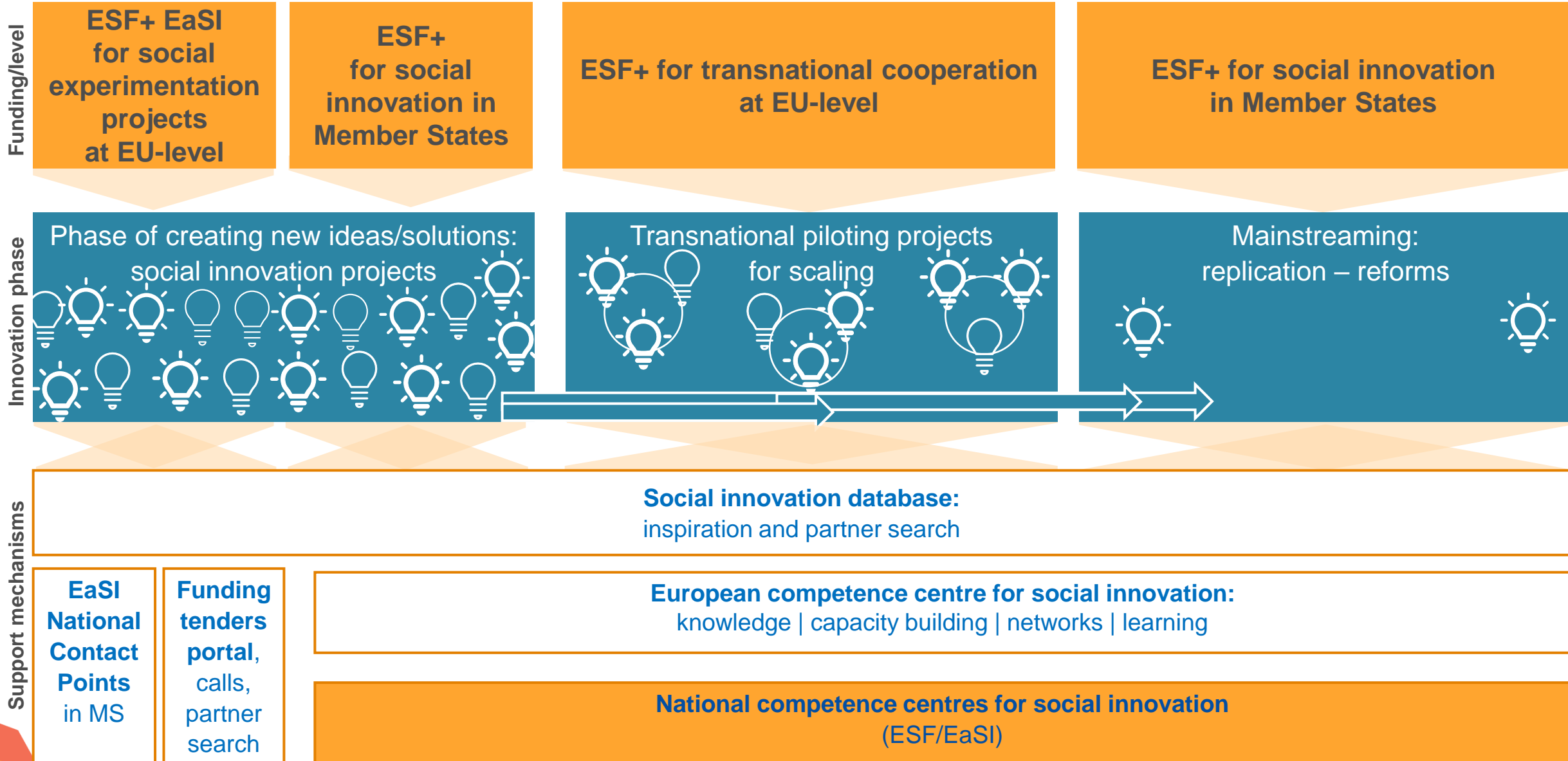
Introducing the Transnationality Team

- Stephen BARNETT – Thematic expert of CoP on Social Innovation
- Karolina JAKUBOWSKA – Coordinator of CoP on Social Innovation
- Ruth SANTOS-BRIEN – Team Leader of ESF Transnational Cooperation Platform

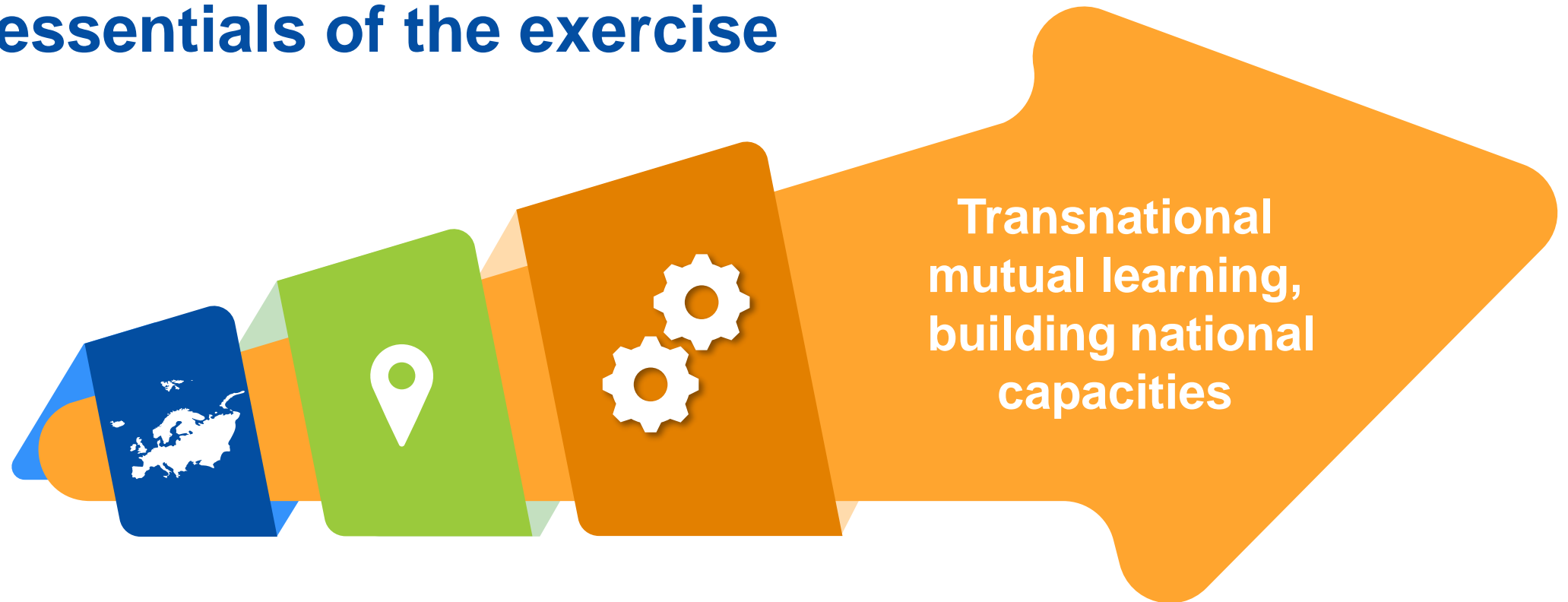
National competence centres for social innovation in the context of ESF+

Risto RAIVIO | European Commission

ESF+ Support for social innovation



National competence centres: the essentials of the exercise



**Transnational
projects**

**building national
competence
centres**

**for conducive social innovation
ecosystems, incl. community-led
local development**

National competence centres: The key functions

Capacity building

- ESF managing authorities, donors, practitioners, local and regional authorities, support organisations, etc.
- Clarifying the concept,
- Tools and capacities for scaling the impact, investment readiness, etc.



Networking and synergies

- Collaboration between public, private and third sector organisations, academia, etc.
- Synergies between different EU funding schemes

Transnational transfer of knowledge

- Sharing knowledge: what works and what does not?
- Beyond sharing: cooperating in joint endeavours, active mentoring and partnerships

Expected results for each country

Competence centre
for social innovation



Analysis of
strengths, weakness
and sources of
inspiration

Blueprint for a
strategy and
action plan



Collection of
initiatives started or
replicated

and each consortium

Prepare and test the replication
or up-scaling of 1-2 social innovation
projects

Selected projects creating national competence centres for social innovation

Stephen J. BARNETT | Lead Thematic Expert of
Community of Practice on
Social Innovation

Competence centres projects in a nutshell

6

projects

25

countries covered

148

organisations

PEnCIL

BE CZ FI LT



5

SI PLUS

AT BG HR HU SK



9

National Competence Centres
for Social Innovation

EE DE DK PL UK



25

BuiCaSuS

ES FR LV SE



27

ENCCSI

BG CY IE PT



28

SEED

EL IT RO SI



54

- Ministry
- National public body
- Sub-national public body
- City
- NGO / Foundation
- Research institute
- Enterprise
- Employer organisation
- Chamber of commerce
- Innovation centre

Pan-European Social Innovation Lab (PEncIL)

BE	FI	CZ	LT
•ESF Flanders	•Ministry of Economic Affairs and Employment	•Ministry of Labour and Social Affairs	•European Social Fund Agency
•Social Innovation Factory			

■ Coordinator ■ Co-applicant □ Associated organisation
In bold org. endorsed as national competence centres by MA or MA

ESF+ Network of Competence Centres for Social Innovation (ENCCSI)

BG		CY		IE		PT		Other	
<ul style="list-style-type: none"> • The Change Foundation • BCause Foundation • Bulgarian Centre for No-Profit Law • Cleantech Bulgaria • The Business Institute 	<ul style="list-style-type: none"> • Habitat for Humanity Bulgaria • Karin Dom • Trust for Social Achievement 	<ul style="list-style-type: none"> • Centre for Social Innovation • SYNTHESIS centre for research and education 	<ul style="list-style-type: none"> • Ministry of Labour, Welfare and Social Insurance • University of Nicosia 	<ul style="list-style-type: none"> • Rethink Ireland • Genio Trust 	<ul style="list-style-type: none"> • National Department of Public Expenditure and Reform 	<ul style="list-style-type: none"> • Cohesion & Development Agency (incl. Portugal Social Innovation) 	<ul style="list-style-type: none"> • Caixa • Calouste Gulbenkian Foundation • Católica Lisbon School of Business & Economics • Santa Casa da Misericórdia de Lisboa 	<ul style="list-style-type: none"> • NL: Euclid Network • BE: European Venture Philanthropy Association 	

■ Coordinator
 ■ Co-applicant
 Associated organisation
In bold org. endorsed as national competence centres by MA or MA

National Competence Centres for Social Innovation

DE		EE		DK	PL	UK	
Social Impact	<ul style="list-style-type: none"> •University Heidelberg (CSI) •Institute for Work & Technology •Ministry for Economics, Labour & Energy of the Federal State of Brandenburg 	<ul style="list-style-type: none"> •National Foundation of Civil Society •Development Centre of Võry County •Tallin University •Social Enterprise Estonia 	<ul style="list-style-type: none"> •Ministry of Social Affairs •Ministry of Interior 	<ul style="list-style-type: none"> •Social Innovation Academy •Danish Design Centre 	<ul style="list-style-type: none"> •Shipyards Foundation 	<ul style="list-style-type: none"> •Glasgow Caledonian University •Social Innovation Exchange 	<ul style="list-style-type: none"> •Glasgow City Council – Centre for Civic Innovation •Challenges Catalyst •Community Enterprise in Scotland •Firstport •The Melting Pot

■ Coordinator
 ■ Co-applicant
 Associated organisation
In bold org. endorsed as national competence centres by MA or MA

Introducing

Eline VERMEERSCH | ESF Flanders | PEnCIL

Deirdre MORTELL | Rethink Ireland | ENCCSI

Norbert KUNZ | Social Impact | National Competence Centres for
Social Innovation

Social Innovation Plus – Competence Centres (SI PLUS)

AT	BG	HU	SK	Other			
<p>Lechner, Reiter & Riesenfelder Social Research</p> <p>•arbeit plus</p>	<p>•Sofia Development Agency</p>	<p>•Foundation for the Technical Development of the Industry</p>	<p>•Ministry of Labour, Social Affairs and Family</p>	<p>•HR: Ministry of Labour, Pension System, Family and Social Policy</p>	<p>•DE: Ministry for Social Policy & Integration, Baden Württemberg</p>	<p>•SI: Slovenian Government Office for Development and European Cohesion Policy</p>	<p>•EU: European Network of Social Integration Enterprises</p>

■ Coordinator
 ■ Co-applicant
 Associated organisation
In bold org. endorsed as national competence centres by MA or MA

Building capacity for a sustainable society (BuiCaSuS)

ES		FR		LV	SE	
<ul style="list-style-type: none"> •Ministry of Labour and Social Economy 	<ul style="list-style-type: none"> •Association Project Human Being •Cepaim Foundation •Action Against Hunger Foundation •ONCE •Foundation for Historical Heritage Santa María •Foundation for Roma people •Spanish National Research Council •Spanish Red Cross •Innobasque •Basque innovation agency •Social Reality Observatory of Navarra 	<ul style="list-style-type: none"> •Avisé 	<ul style="list-style-type: none"> •Common Laboratory Destins •Macif Foundation •General Delegation for Employment and Professional Training •Godin Institute •La 27e Région •SAS INCO Ventures 	<ul style="list-style-type: none"> •Society Integration Foundation 	<ul style="list-style-type: none"> •Forum for social innovation at Malmö University •Association Inclusion (Inkludera) •Reach for Change Foundation 	<ul style="list-style-type: none"> •Jönköping University •Luleå University of Technology •Umeå University •Örebro University

■ Coordinator
 ■ Co-applicant
 Associated organisation
In bold org. endorsed as national competence centres by MA or MA

Social innovation Ecosystem Development (SEED)

IT	EL	RO	SI
<div data-bbox="201 375 453 539" style="background-color: #e67e22; color: white; padding: 5px;">City of Turin</div> <ul style="list-style-type: none"> • Bologna University • European Research Institute on Cooperative and Social Enterprises (EURICSE) • Giacomo Brodolini Foundation • Social Italy Foundation • Politecnico Milano • Politecnico Torino 	<ul style="list-style-type: none"> • Ministry of Labour and Social Affairs • Science for You • Development Agency of Karditsa • KOLLEKTIVA 	<div data-bbox="1332 375 1584 1250" style="background-color: #e67e22; color: white; padding: 5px;">• Development Consulting Group (DCG)</div>	<div data-bbox="1898 375 2150 1250" style="background-color: #e67e22; color: white; padding: 5px;"> <ul style="list-style-type: none"> • Ministry of Economic Development and Technology • Centre for Space Technologies Herman Potočnik Noordung • Hashnet • Sončna zadrug </div>
<ul style="list-style-type: none"> • Italian Association for cooperation and non-profit • Red Cross Italy • Cart'Armata • City of Naples • Committee Gabriele Nigro • Presidency of the Council of Ministers • Italian Social Innovation Foundation • Urban Innovation Foundation • Turin Saving Bank Foundation • National consortia for social cooperation • Human Foundation 	<ul style="list-style-type: none"> • Creative Thinking Development • Social Impact and Innovation • Stimmuli for Social Change 	<ul style="list-style-type: none"> • Ashoka Romania • Municipality of Brasov 	<ul style="list-style-type: none"> • Centre for Alternative and Autonomous Production • Association for Culture and Education • Development Agency Kozjansko • Economic Interest Rogla-Zreče • Tourist Information Center of Slovenske Konjice

■ Coordinator
 ■ Co-applicant
 Associated organisation
In bold org. endorsed as national competence centres by MA or MA

Introducing

Barbara WILLSBERGER | L&R Social Research | SI PLUS

Patricia BEZUNARTEA BARRIO | Ministry of Social Rights and Agenda 2030
| BuiCaSuS

Francesca RIZZO | University – Politecnico di Milano | SEED

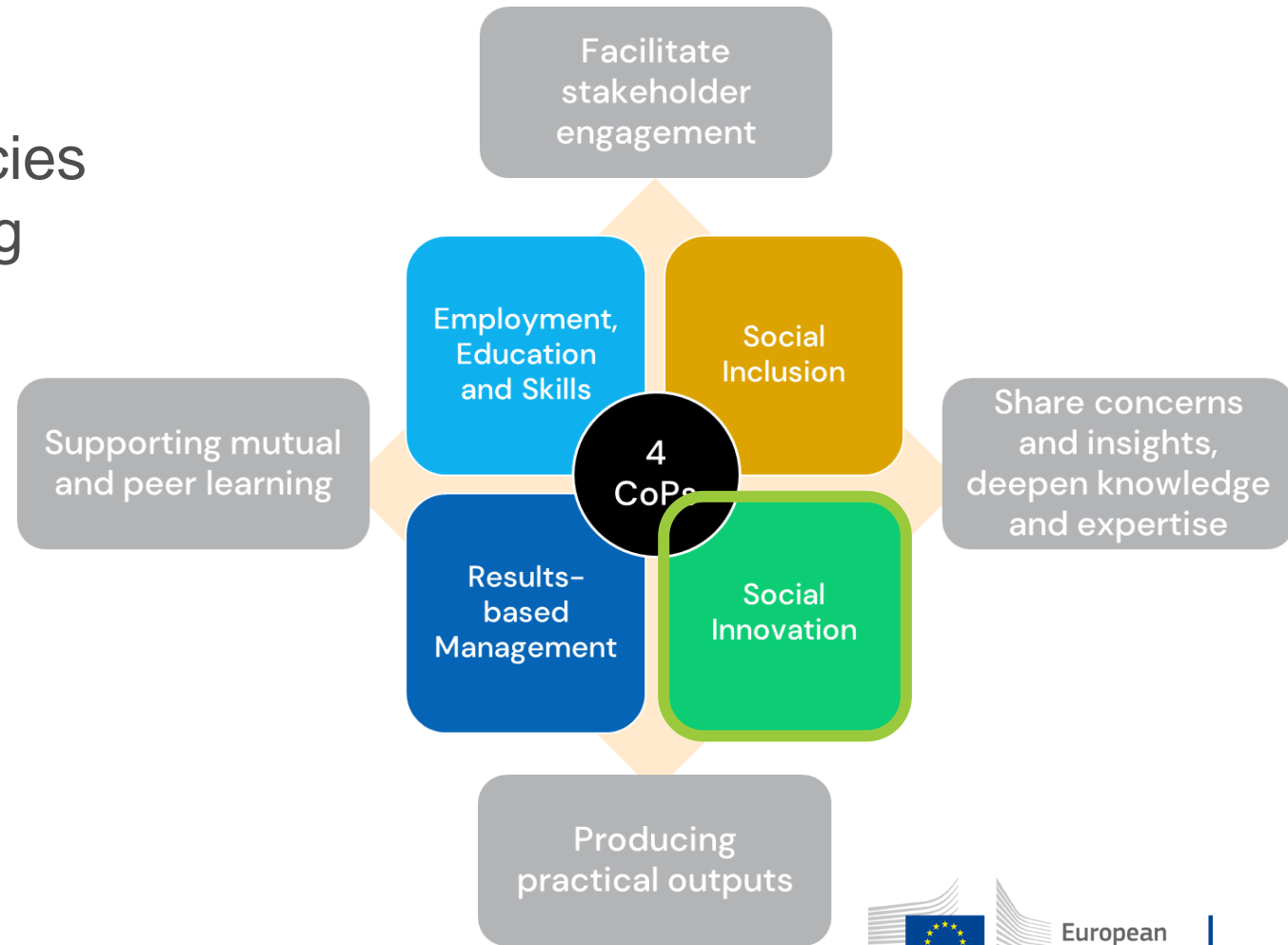
Support for mutual learning between the projects

Karolina JAKUBOWSKA | Coordinator of
Community of Practice on
Social Innovation

ESF Transnational Cooperation Platform

Goals

Increasing the effectiveness of policies supported by the ESF by “facilitating transnational partnerships, the exchange of experience, capacity building and networking, and the capitalisation and dissemination of relevant outcomes”
(ESF Regulation 2013/1304/EU)



Welcome to Community of Practice on Social Innovation



MS TEAMS

Space to
exchange with
CoP members,
access and
share relevant
materials



CoP meetings on different topics, for example:

- Mutual learning and scaling tools
- Various designs of competence centres – country examples, dos and don'ts
- Social innovation eco-systems and set-up in ESF+ Programmes



Meetings for competence centres projects

organised back-to-back with CoP meetings



Interviews about competence centres projects

aiming to feed into CoP meetings

(conversations with lead organisation, endorsed national partner)

Indicative work programme of activities

2021

Jun

Jul

Aug

Sep

Oct

Nov

Dec

2022

Jan

Feb

Mar

Apr

May

Jun



Scoping interviews



Scoping interviews



Scoping interviews



CoP plenary meeting
21-22 June



Mutual learning
and scaling tools



Various designs of
competence centres



Social innovation
eco-systems and ESF+

Fact sheets about competence centres for social innovation | Social innovation database



We are always delighted when we hear from you.

*Let's keep in touch over MS Teams
and see you soon at CoP plenary meeting
(21-22 June)*